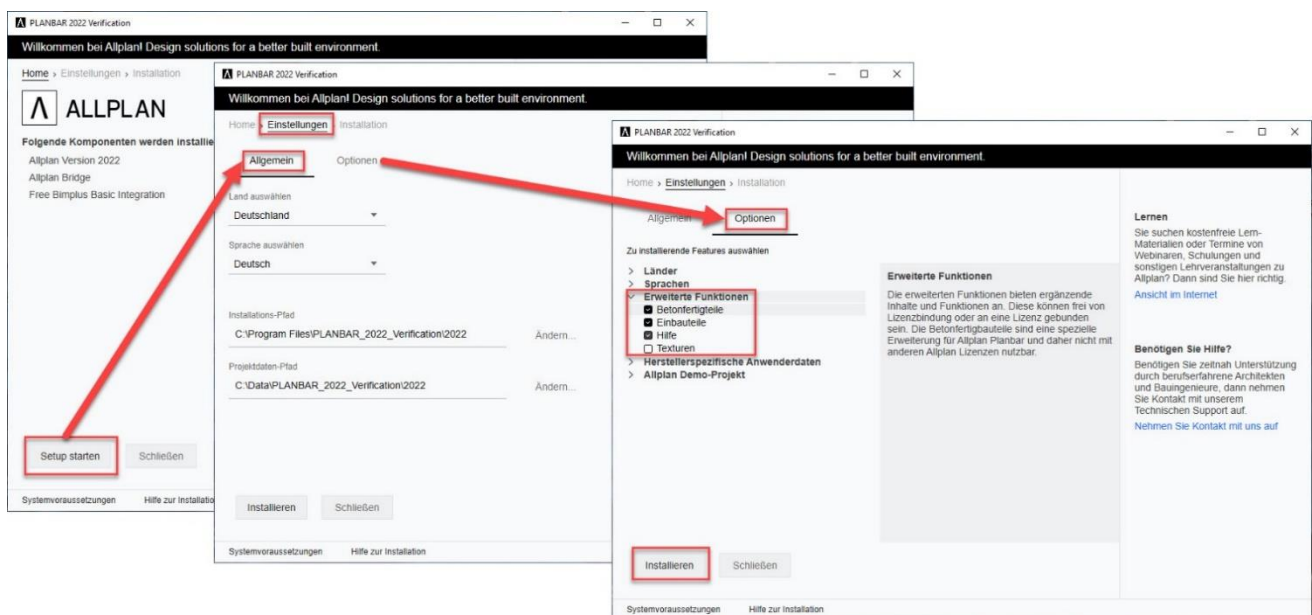


Installation of Planbar 2022 - Important steps

Dear Customer,

please read this manual before you start the installation!

1. Please log in to the *Allplan Precast Self Service Portal* <https://precast.topdesk.net/> and download your software in the menu item "Software/Downloads".
2. Start the installation process by opening the Allplan_Installer.



3. You can find further helpful hints for the setup in our installation guide, which you can find on the *Allplan Precast Self Service Portal* in the [FAQs under "KB-1005 New installation of Planbar with MSI setup"](#).

To access the *Allplan Precast Self Service Portal*, you must be registered there and have a valid service contract. If you are not yet registered or do not have a valid service contract, please send an e-mail to: support.precast@allplan.com

PLEASE BE SURE TO READ THE RECOMMENDATIONS FOR EXISTING ALLPLAN USERS ON THE NEXT PAGE.

Installing Planbar 2022 - Recommendations for existing Allplan users

You are using Allplan and would now like to use Planbar in addition? This is what you need to consider.

We recommend that Allplan customers who require Precast functionality **install only Planbar on all existing workstations. The licenses for Allplan Engineering can also be used in Planbar** - the entire functionality of Allplan is included in Planbar.

Background: Allplan and Planbar differ technologically when it comes to views. The different types of views in Allplan and Planbar cannot be mixed or actively loaded together - see our info box for more details.

If it is not possible to install and use Planbar alone, we recommend the following:

- A parallel installation of Allplan and Planbar from a main version is only possible to a limited extent on one workstation. Please refer to the Allplan Precast Self Service Portal FAQ article "[KB-0286](#)". The reason for this is that some directories (e.g. program data - folders) are used by both programs and would overwrite each other. So install either Allplan or Planbar on one workstation.
- **Do not mix Planbar and Allplan installations.** Always use separate directories for network installations or installations with workgroup. This applies to all directories used, such as the PRJ folder (Own CAD projects) and the STD folder (Office standard).
- Access projects either with Allplan or with Planbar. Data exchange by transferring drawing files from Allplan to Planbar is possible.
- Do not transfer **drawing files** with precast elements from Planbar to Allplan. Here, the data exchange should take place via **IFC**.

Views in Allplan and Planbar

The element plan technology of Planbar is based on "reinforcement views". For this reason, views created automatically in Planbar are generally generated as "reinforcement views" by default. The default in Allplan is the new "views and sections". For example, when you create reinforcement elements in Planbar, a "Reinforcement view" is created if no view already exists; in Allplan, on the other hand, this is a view of the "Views and sections" type. If a view type already exists in the drawing file, this view type is generated for automatically generated views of reinforcement elements. If reinforcement elements are imported via IFC, for example, this is similar. Reinforcement views" are generated automatically in Planbar and "Views and sections" in Allplan.

If you are using **add-ons** or extensions for Allplan, please ask the manufacturer of the software whether they are also released for Planbar. We will be happy to assist you in clarifying this.

Step-by-step instructions on how to install Planbar can be found in the *Allplan Precast [Self Service Portal](#)*.

For information on how to activate or update your license ticket, see the *Allplan Precast Self Service Portal* FAQ post "[KB-0598](#)".

To access the *Allplan Precast Self Service Portal*, you must be registered there and have a valid service contract. If you are not yet registered or do not have a valid service contract, please send an e-mail to: support.precast@allplan.com