

**On-Site Photo** is a very precise procedure to determine dimensions of digital photos.

- ▶ Establishing the dimensional reference using one or two known lengths
- ▶ Correcting perspectives and image defects caused by the lens

**On-Site Photo** allows everyone to use the advantages of photogrammetric procedures.

- ▶ Images of any digital camera and scanner
- ▶ Measuring several image planes in a project
- ▶ Pixel-accurate working with display of the measuring accuracy

**On-Site Photo** is a universal tool for planners, experts, site managers and craftsmen.

**On-Site Photo** generates layouted reports for lengths, circumferences, areas and volumes which can be exported to MS Excel.

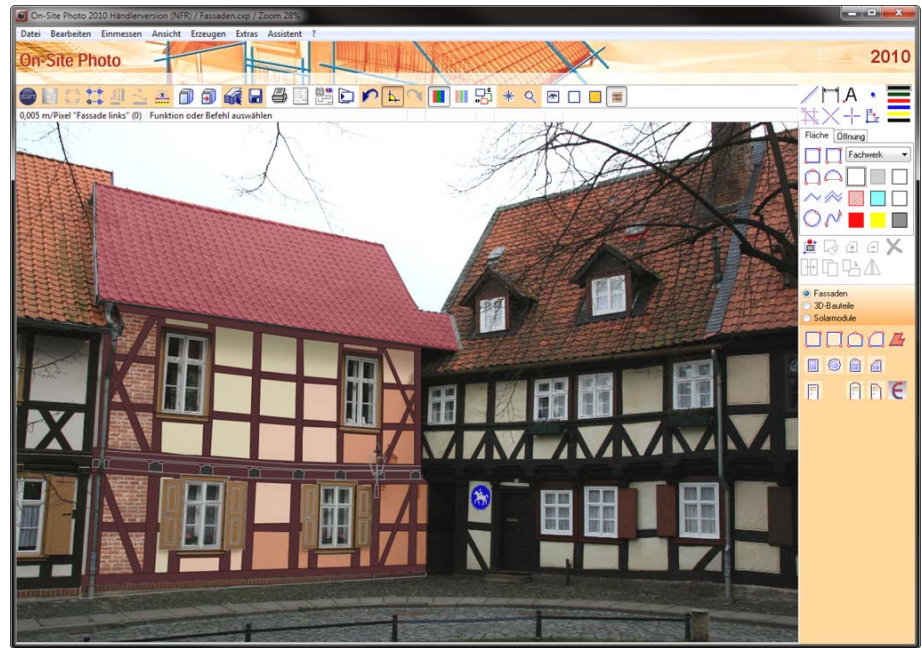
For the export to CAD, a powerful 2D and 3D Allplan interface is available. Additionally **On-Site Photo** offers an AutoCAD interface and the DXF format. If purchased via company Glaser **On-Site Photo** contains an exclusive -isb cad- interface.

**On-Site Photo** rectifies images or image sections and saves them with freely selectable resolutions.

**On-Site Photo** assembles rectified images to high-resolution panoramas.

**On-Site Photo** provides comfortable 2D and 3D drawing functions to create:

- ▶ View drawings and damage mapping
- ▶ Calculations of the enveloping surface of buildings with a direct interface to *Energieberater Professional* of company Hottgenroth
- ▶ 3D components for the graphic quantity determination on scanned plans
- ▶ Planning and visualization of solar modules with a comprehensive module library and direct interface to *PVscout* of company Hottgenroth



On-Site Photo 2010

**On-Site Photo** offers extensive image designing functions for colours and textures.



Example 3D representation

Colours can fully cover image areas and remain transparent, if desired. Transparent colours take into account structures and lighting which are present in the image. This leads to high-quality optical representations in the colouring.



Example solar modules

Colours are selected from the Brillux colour atlas (includes RAL Classic) or the Windows colours.

Textures of the texture library are represented with the right size in the perspective. In addition any image can be inserted as a poster.



View with colours and textures

### System requirements

- ▶ Windows XP/Vista/7
- ▶ Minimum 1 GHz processor,
- ▶ Main memory minimum 512 MB RAM,
- ▶ At least 1024x768 pixels,
- ▶ At least 16 bit colour depth,
- ▶ 400 MB hard disk capacity,
- ▶ CD-ROM for installation